



1280 N Red Gum Street Anaheim, CA 92806 • 714-632-1400

## **400 CFM MKVES(HV) Vapor Extraction Package / High Vacuum System**

### **Standard Features:**

- Small Footprint Skid Mounting
- Entrained Liquid Separator
- Dilution Filter / Valve
- Stainless Steel Transfer Pump
- Oil Sealed Liquid Ring Blower
- Oil Cooler Assembly
- 25 Horsepower TEFC Motor
- Pitot Tube / Magnahelic Gauge

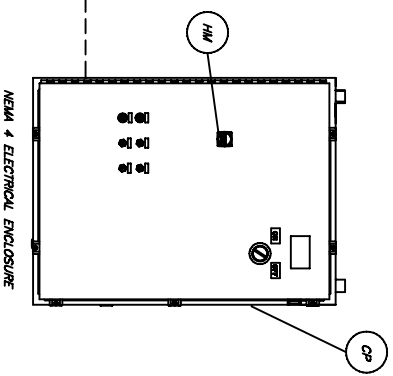
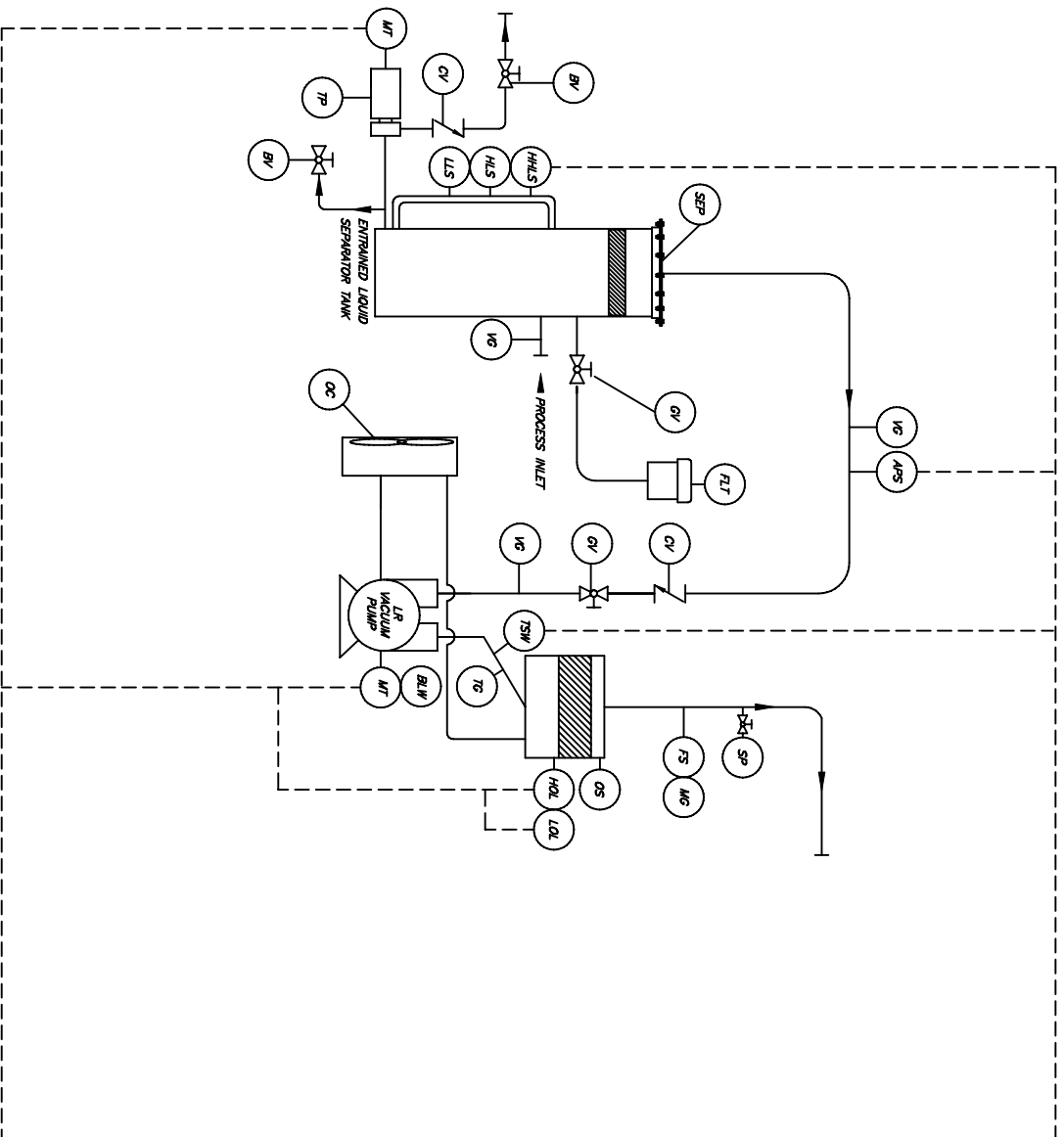
### **Standard Options:**

Air to Air Cooler System  
Trailer Mounted System  
Remote Telemetry  
Totally Enclosed System  
Single Phase System  
Sound Enclosure  
UL Listed Electrical Enclosure 306379



### **Standard Performance Specifications:**

Skid Dimensions = 4' Width x 8' Length x 13' Height  
3/16" Heavy Duty Steel Construction Throughout  
Electrical Requirement = 208/240 Volt/3 Phase/100 Amp  
Electrical Requirement = 208/240 Volt/1 Phase/150 Amp  
Process Flow = 400 CFM and up to 28" Hg. Vacuum



# MAKO INDUSTRIES

VAPOR EXTRACTION SYSTEM

PROCESS INSTRUMENTATION DRAWING

DATE:  
9/15/08

FILE:  
400 MKVES.PID

## 400 CFM MKVES(HV)