



1280 N Red Gum Street Anaheim, CA 92806 • 714-632-1400

500 CFM MKVES(MV) Vapor Extraction Package / Medium Vacuum System

Standard Features:

- Small Footprint Skid Mounting
- Entrained Liquid Separator
- Dilution Filter / Valve
- Stainless Steel Transfer Pump
- Positive Displacement Blower
- Blower Re-circulation Valve
- 20 Horsepower TEFC Motor
- Sound Enclosure
- Pitot Tube / Magnahelic Gauge

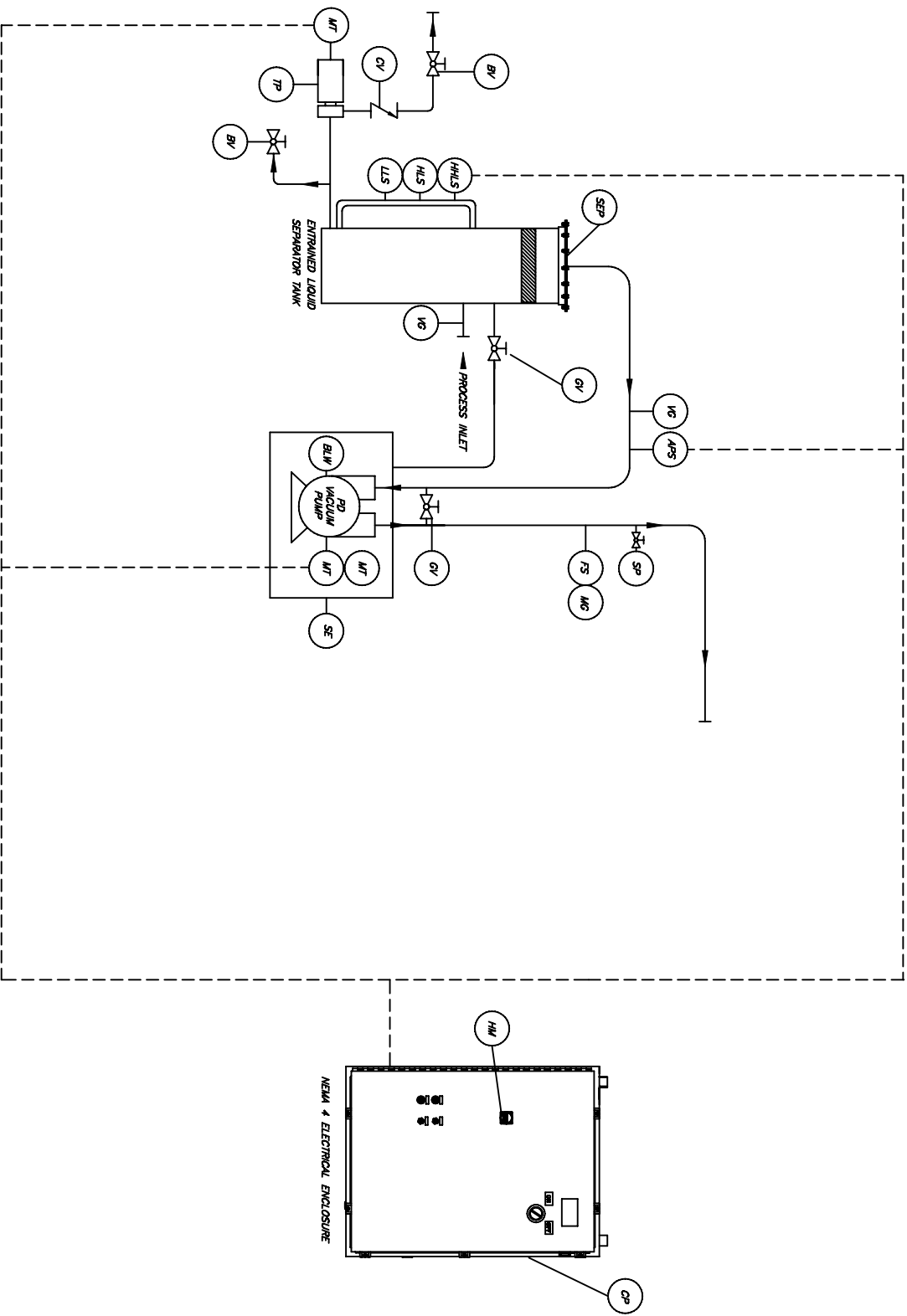
Standard Options:

Air to Air Cooler System
Trailer Mounted System
Remote Telemetry
Totally Enclosed System
Single Phase System
UL Listed Electrical Enclosure E306379



Standard Performance Specifications:

Skid Dimensions = 4' Width x 8' Length x 13' Height
3/16" Heavy Duty Steel Construction Throughout
Electrical Requirement = 208/240 Volt/3 Phase/100 Amp
Electrical Requirement = 208/240 Volt/1 Phase/150 Amp
Process Flow = 500 CFM and up to 12" Hg. Vacuum



MAKO INDUSTRIES

VAPOR EXTRACTION PACKAGE

PROCESS INSTRUMENTATION DRAWING

DATE: 9/15/08 FILE: 500 MKVES.PID

500 CFM MKVES(MV)